

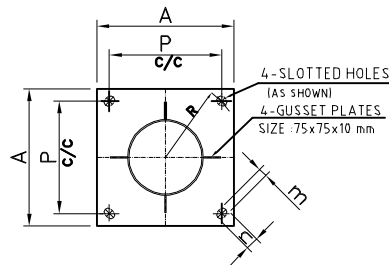
CONICAL LIGHTING POLES

MOMRA SPECIFICATIONS

SHAFT, BASE PLATE AND ANCHOR BOLTS DETAILS

CODE	SHAFT					BASE PLATE					ANCHOR BOLTS	
	HEIGHT=H m	TD A/F mm	BD A/F mm	W. THK mm	DOOR=D (bxh)mm	A mm	P mm	THK. † mm	STIFFENER JxKx thk	SLOTSIZE (m xn)mm	ANC.BOLT DESIG.	ANCB.SIZE DxL
CLP003	3.0	60	100	3.0	80x300	250	200	10	-	28x45	J18400	M18x400
CLP004	4.0	60	130	3.0	80x300	250	200	10	-	28x45	J18400	M18x400
CLP005	5.0	60	130	3.0	100x400	350	250	10	75x75x10	28x45	J24500	M24x500
CLP006	6.0	60	150	3.0	100x400	350	250	10	75x75x10	28x45	J24500	M24x500
CLP007	7.0	60	165	4.0	140x400	400	300	15	75x75x10	28x45	J24500	M24x500
CLP008	8.0	60	190	4.0	140x400	400	300	15	75x75x10	28x45	J24500	M24x500
CLP009	9.0	100	210	4.0	140x500	400	300	15	75x75x10	28x45	J24700	M24x700
CLP010	10.0	110	232	4.0	140x500	400	300	15	75x75x10	28x45	J24700	M24x700
CLP012	12.0	120	267	4.0	140x500	400	300	20	75x75x10	32x45	J27900	M27x900
CLP014	14.0	120	292	4.0	140x500	500	400	20	120x75x10	32x45	J27x900	M27x900
CLP015	15.0	120	305	5.0/4.0	150x500	600	500	25	120x75x10	36x50	J301000	M30x1000
CLP016	16.0	120	320	5.0/4.0	150x500	600	500	25	120x75x10	36x50	J301000	M30x1000

200 50
 ϕ TD A/F
 2 ROWS OF 4 Nos. M10
 BOLTS, PLACED AT 90° APART.



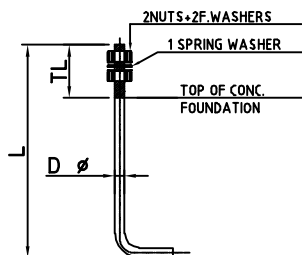
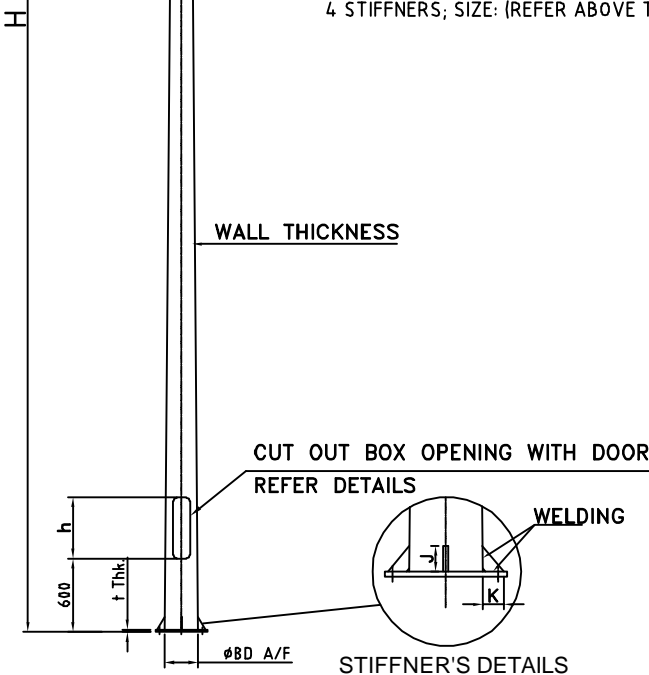
BASE PLATE DETAIL
 SIZE: AxAx† Thk.
 4 STIFFNERS; SIZE: (REFER ABOVE TABLE)

MATERIALS:

ITEMS	STEEL GRADE / STANDARDS
1. POLE SHAFT	ST-44 EN 10027-1 S235J0
2. BASE PLATE	SS400 TO JIS G3101 OR EQUIV.
3. ANCHOR BOLTS	SS400 TO JIS G3101 OR EQUIV.
4. GALVANIZING	HDG TO ASTM A123 OR ISO 1461
5. GALV. COATING	3mm Thk. 70 MICRON Thk. \geq 4mm Thk. $>$ 85 MICRON Thk.

TOLERANCES: LIGHTING POLES

DIMENSIONS	ALL DIMENSIONS ARE IN MM.
LENGTH (SHAFT)	\pm 0.5%
THICKNESS	+ 2.0%, -1.0%
T. LENGTH C/W ARM BRKT.	\pm 1%
DEFLECTION	0.03% OF SHAFT LENGTH
A/F DIA.	\pm 15%
WEIGHT	\pm 5% OF CALCULATED WEIGHT. W



ANCHOR BOLT- L TYPE
 OPTION: J TYPE ANCHOR BOLTS
 (TO BE SUPPLIED ON REQUEST)

NOTE : ALL DIMENSIONS ARE IN MILLIMETERS.