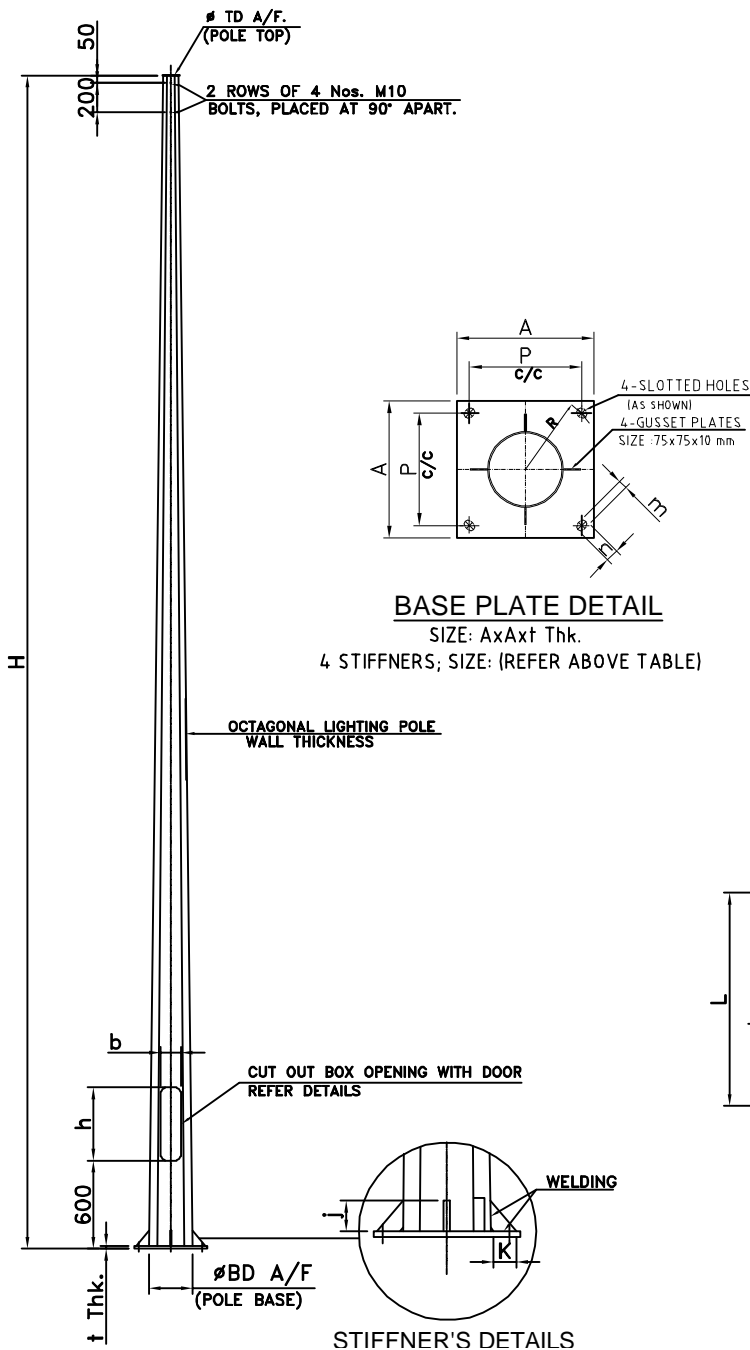


OCTAGONAL LIGHTING POLES

MOMRA SPECIFICATIONS

SHAFT, BASE PLATE AND ANCHOR BOLTS DETAILS

CODE	SHAFT					BASE PLATE					ANCHOR BOLTS	
	HEIGHT=H m	TD A/F mm	BD A/F mm	W. THK mm	DOOR=D (bxh)mm	A mm	P mm	THK. † mm	STIFFENER JxKx thk	SLOTSIZE (mxn)mm	ANC.BOLT DESIG.	ANCB.SIZE DxL
OLP003	3.0	60	102	3.0	80x300	250	200	10	-	28x45	J18400	M18x400
OLP004	4.0	60	156	3.0	80x300	250	200	10	-	28x45	J18400	M18x400
OPL005	5.0	60	156	3.0	100x400	350	250	10	75x75x10	28x45	J24500	M24x500
OLP006	6.0	60	156	3.0	100x400	350	250	10	75x75x10	28x45	J24500	M24x500
OLP007	7.0	60	190	4.0	140x400	400	300	15	75x75x10	28x45	J24500	M24x500
OLP008	8.0	60	190	4.0	140x400	400	300	15	75x75x10	28x45	J24500	M24x500
OLP009	9.0	60	190	4.0	140x500	400	300	15	75x75x10	28x45	J24700	M24x700
OLP010	10.0	100	210	4.0	140x500	400	300	15	75x75x10	28x45	J24700	M24x700
OLP012	12.0	100	250	4.0	140x500	400	300	20	75x75x10	32x45	J27900	M27x900
OLP014	14.0	110	285	4.0	140x500	500	400	20	120x75x10	32x45	J27x900	M27x900
OLP015	15(10/5)	120	300	5.0/4.0	150x500	600	500	25	120x75x10	36x50	J301000	M30x1000
OLP016	16(10/6)	120	320	5.0/4.0	150x500	600	500	25	120x75x10	36x50	J301000	M30x1000

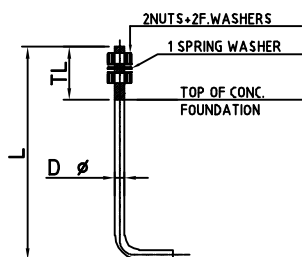


MATERIALS:

ITEMS	STEEL GRADE / STANDARDS
1. POLE SHAFT	ST-44 EN 10027-1 S235J0
2. BASE PLATE	SS400 TO JIS G3101 OR EQUIV.
3. ANCHOR BOLTS	SS400 TO JIS G3101 OR EQUIV.
4. GALVANIZING	HDG TO ASTM A123 OR ISO 1461
5. GALV. COATING	3mm Thk. 70 MICRON Thk. ≥ 4mm Thk. > 85 MICRON Thk.

TOLERANCES: LIGHTING POLES

DIMENSIONS	ALL DIMENSIONS ARE IN MM.
LENGTH (SHAFT)	± 0.5%
THICKNESS	+ 2.0%, -1.0%
T. LENGTH C/W ARM BRKT.	± 1%
DEFLECTION	0.03% OF SHAFT LENGTH
A/F DIA.	± 15%
WEIGHT	± 5% OF CALCULATED WEIGHT. W



ANCHOR BOLT- L TYPE
 OPTION: J TYPE ANCHOR BOLTS
 (TO BE SUPPLIED ON REQUEST)

NOTE : ALL DIMENSIONS ARE IN MILLIMETERS.